

## Organelle Review Game

### *Prokaryotic vs Eukaryotic*

1. Has a nucleus
  - a. Prokaryotic Only
  - b. Eukaryotic Only
  - c. Both Prokaryotic and Eukaryotic
  - d. Optional for both
2. Bacteria is an example of these
  - a. Prokaryotic Only
  - b. Eukaryotic Only
  - c. Both Prokaryotic and Eukaryotic
  - d. Optional for both
3. Has a mitochondria
  - a. Prokaryotic Only
  - b. Eukaryotic Only
  - c. Both Prokaryotic and Eukaryotic
  - d. Optional for both
4. Has Ribosomes
  - a. Prokaryotic Only
  - b. Eukaryotic Only
  - c. Both Prokaryotic and Eukaryotic
  - d. Optional for both
5. Has a cell wall
  - a. Prokaryotic Only
  - b. Eukaryotic Only
  - c. Both Prokaryotic and Eukaryotic
  - d. Optional for both
6. Has a cell membrane
  - a. Prokaryotic Only
  - b. Eukaryotic Only
  - c. Both Prokaryotic and Eukaryotic
  - d. Optional for both
7. Is alive
  - a. Prokaryotic Only
  - b. Eukaryotic Only
  - c. Both Prokaryotic and Eukaryotic
  - d. Optional for both

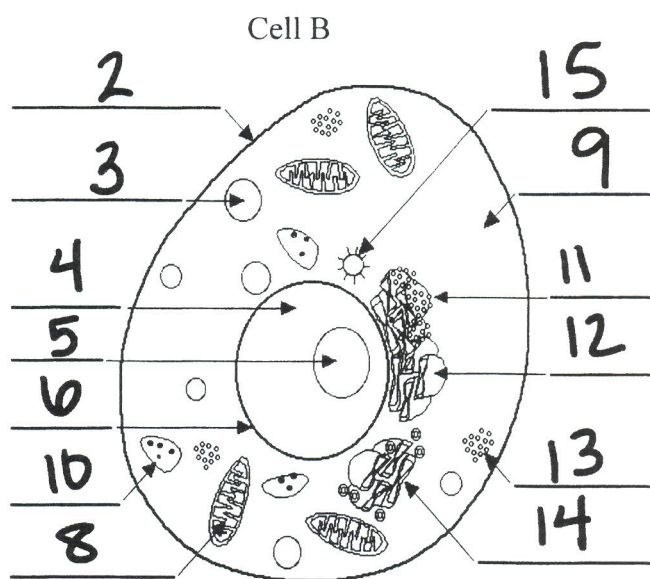
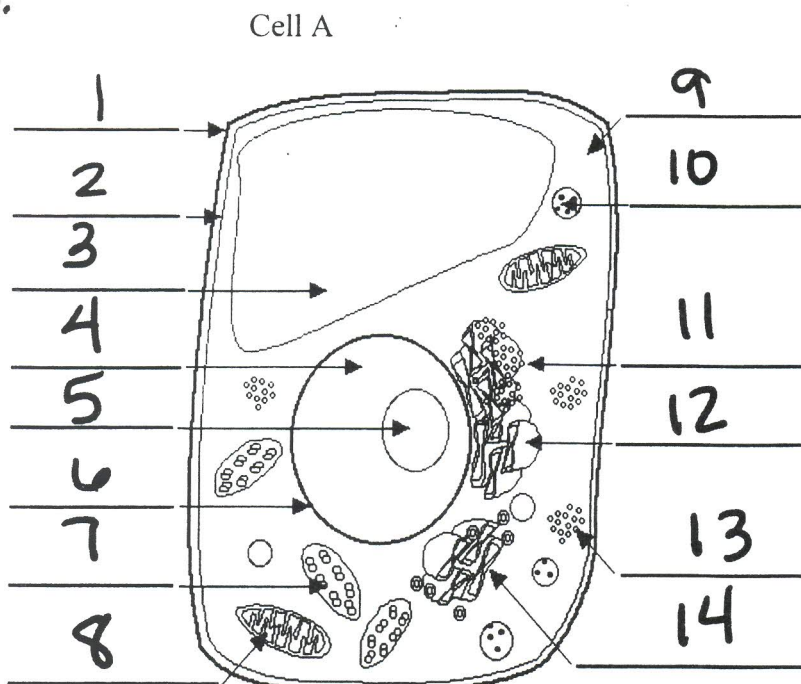
8. Which of the following structures cannot be found in a prokaryotic cell?
  - a. flagella
  - b. cell membrane
  - c. lysosomes
  - d. ribosomes

### *Plant Cells vs Animal Cells*

9. Has a cell wall
  - a. Plant Cells Only
  - b. Animal Cells Only
  - c. Both Plant and Animal Cells
10. Has a cell membrane
  - a. Plant Cells Only
  - b. Animal Cells Only
  - c. Both Plant and Animal Cells
11. Has many small vacuoles
  - a. Plant Cells Only
  - b. Animal Cells Only
  - c. Both Plant and Animal Cells
12. Has an angular/rectangular shape
  - a. Plant Cells Only
  - b. Animal Cells Only
  - c. Both Plant and Animal Cells
13. Is able to convert energy from the sun into chemical energy
  - a. Plant Cells Only
  - b. Animal Cells Only
  - c. Both Plant and Animal Cells
14. Has an out layer made out of cellulose
  - a. Plant Cells Only
  - b. Animal Cells Only
  - c. Both Plant and Animal Cells
15. Has centrioles
  - a. Plant Cells Only
  - b. Animal Cells Only
  - c. Both Plant and Animal Cells

*Specific Organelles*

16. Stores the DNA for a cell
  - a. Nucleolus
  - b. Nucleus
  - c. Ribosomes
  - d. RER
17. Makes protein for the cell
  - a. Nucleolus
  - b. Nucleus
  - c. Ribosomes
  - d. RER
18. Makes ribosomes
  - a. Nucleolus
  - b. Nucleus
  - c. Ribosomes
  - d. RER
19. Made out of a lipid bilayer and surrounds the cell
  - a. Cell Wall
  - b. Cytoplasm
  - c. Cytoskeleton
  - d. Cell Membrane
20. The green flat leaves where photosynthesis happens would have many cells with a lot of
  - a. Chloroplasts
  - b. Mitochondria
  - c. Vacuoles
  - d. Lysosomes
21. Your muscle cells which need a lot of energy should be made of cells with a lot of
  - a. Chloroplasts
  - b. Mitochondria
  - c. Vacuoles
  - d. Lysosomes
22. These help the cell divide
  - a. Lysosomes
  - b. Cell Membrane
  - c. Centrioles
  - d. Vacuoles
23. Which of the following would be abundant in the organs that have to make digestive juices
  - a. Endoplasmic Reticulum
  - b. Lysosomes
  - c. Mitochondria
  - d. Golgi Bodies
24. Which of the following is not a part of the cell theory
  - a. All living organisms are made of cells
  - b. Cells must come from other cells
  - c. Cells are the smallest unit to be alive
  - d. Cells must move in order to be considered alive



Use the pictures to help you label these

25. Which is a plant cell

- a. Cell A
- b. Cell B

c. Not Enough Information

26. Cell A: Which part is the Nucleus

- a. 3
- b. 4

- c. 5
- d. 10

27. Which part is responsible for converting chemical energy to usable energy

- a. 12
- b. 7

- c. 13
- d. 8

28. Lipids are made here

- a. 5
- b. 11

- c. 12
- d. 14

29. Contains chlorophyll and are responsible for changing solar energy into chemical energy

- a. 12
- b. 7

- c. 13
- d. 8

30. UPS center of a cell

- a. 11
- b. 12

- c. 13
- d. 14

**\*\*Make sure that you can label all parts in the above pictures\*\***