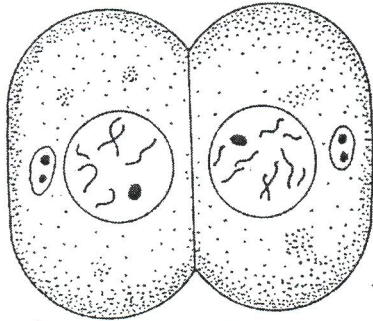


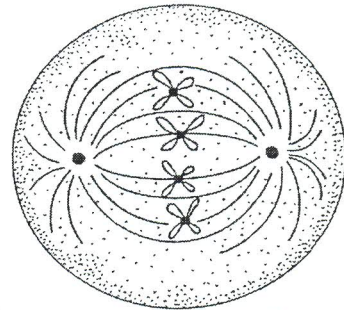
Name _____

Mitosis Activity

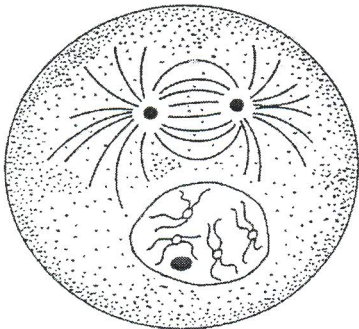
Below are pictures of all of the different stages of mitosis jumbled up. Your task is to rearrange the pictures so that they appear in the correct order and title each phase. When you have them correctly ordered, tape them to the back of the questions sheet. Once you have done that, write a one to two sentence description of what is happening in each stage. Also label each picture with the correct stage(s) of the cell cycle.



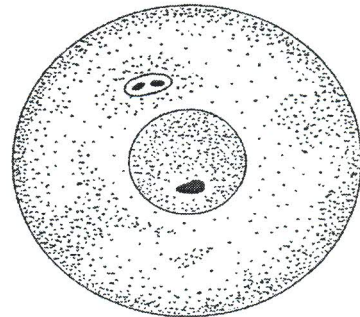
5) telophase



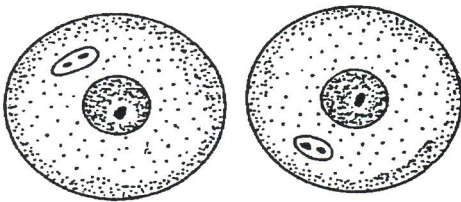
3) meta phase



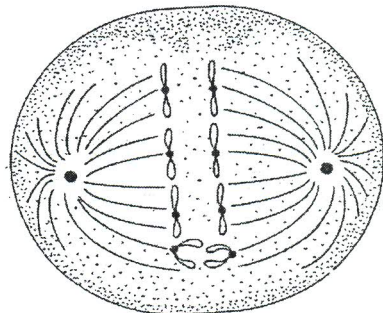
2) prophase



1) interphase



6) cyto kinesis



4) Anaphase

Questions:

1. Describe what a spindle fiber looks like.

long string

2. What role does the spindle fiber play in cell division?

pulls the chromosomes apart

3. How do centrioles aid in cell division?

grow spindle fibers

4. Which of the stages that you cut out should take the longest amount of time?

Interphase

5. What are the different phases of interphase? What happens in each of those phases?

G₁ - Growth

G₂ - Growth

S - DNA replicates

6. During which stages is the nuclear membrane present?

Interphase, Prophase, telophase, cytokinesis

7. Why do the chromosomes have to replicate?

so each daughter cell get a copy

8. At which stage does mitosis actually start?

Prophase

9. Go back to the pictures that you rearranged. On the pictures make sure you can identify the following structures and LABEL THEM!

- a. Chromatid
- b. Chromosome
- c. Centromere
- d. Spindle Fiber
- e. Nuclear Membrane
- f. Centriole
- g. Nucleolus
- h. Daughter Cells

} see other worksheet

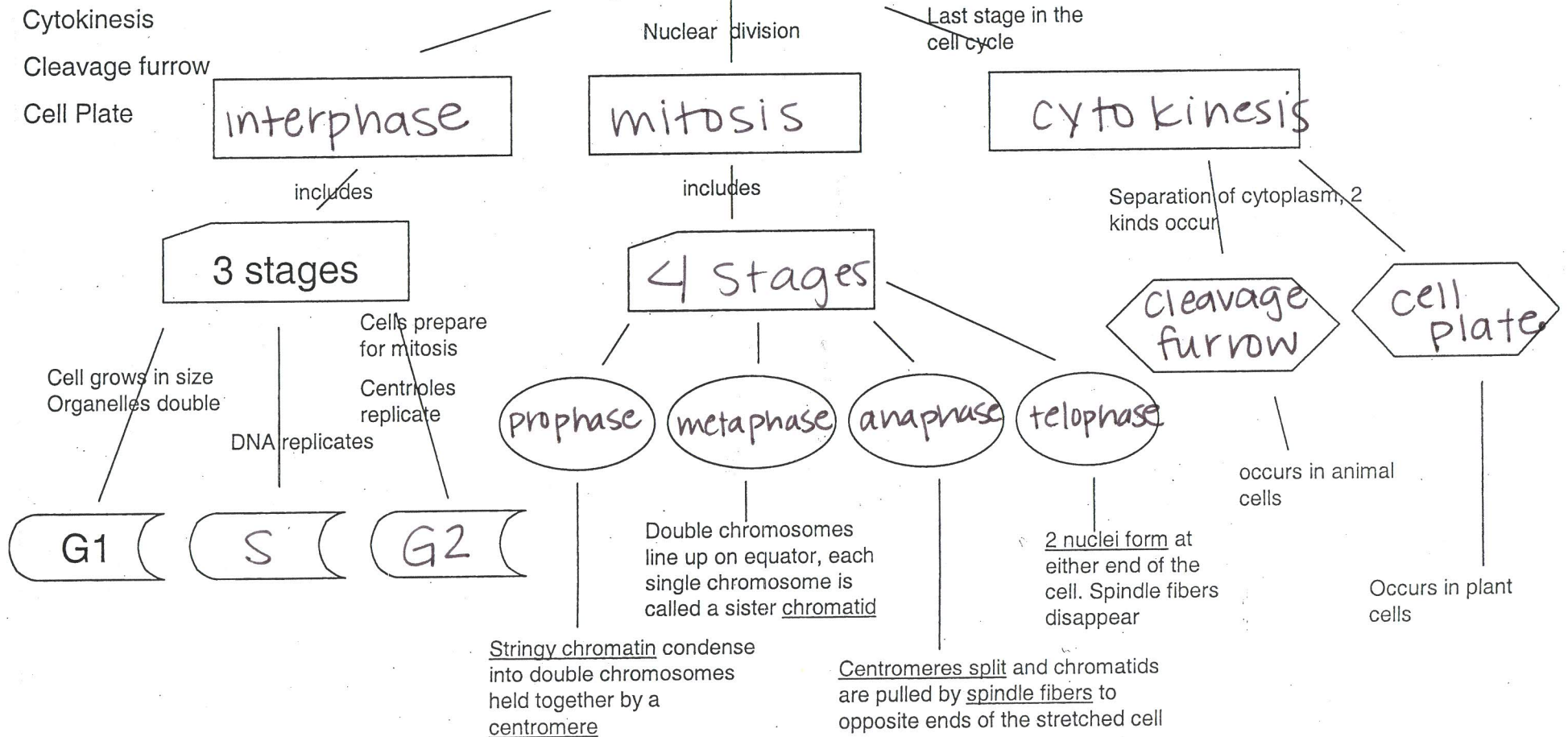
- Anaphase
- Prophase
- Telephase
- Metaphase
- Interphase
- G2
- S (synthesis)
- Mitosis
- 4 stages
- Cytokinesis
- Cleavage furrow
- Cell Plate

Cell Cycle

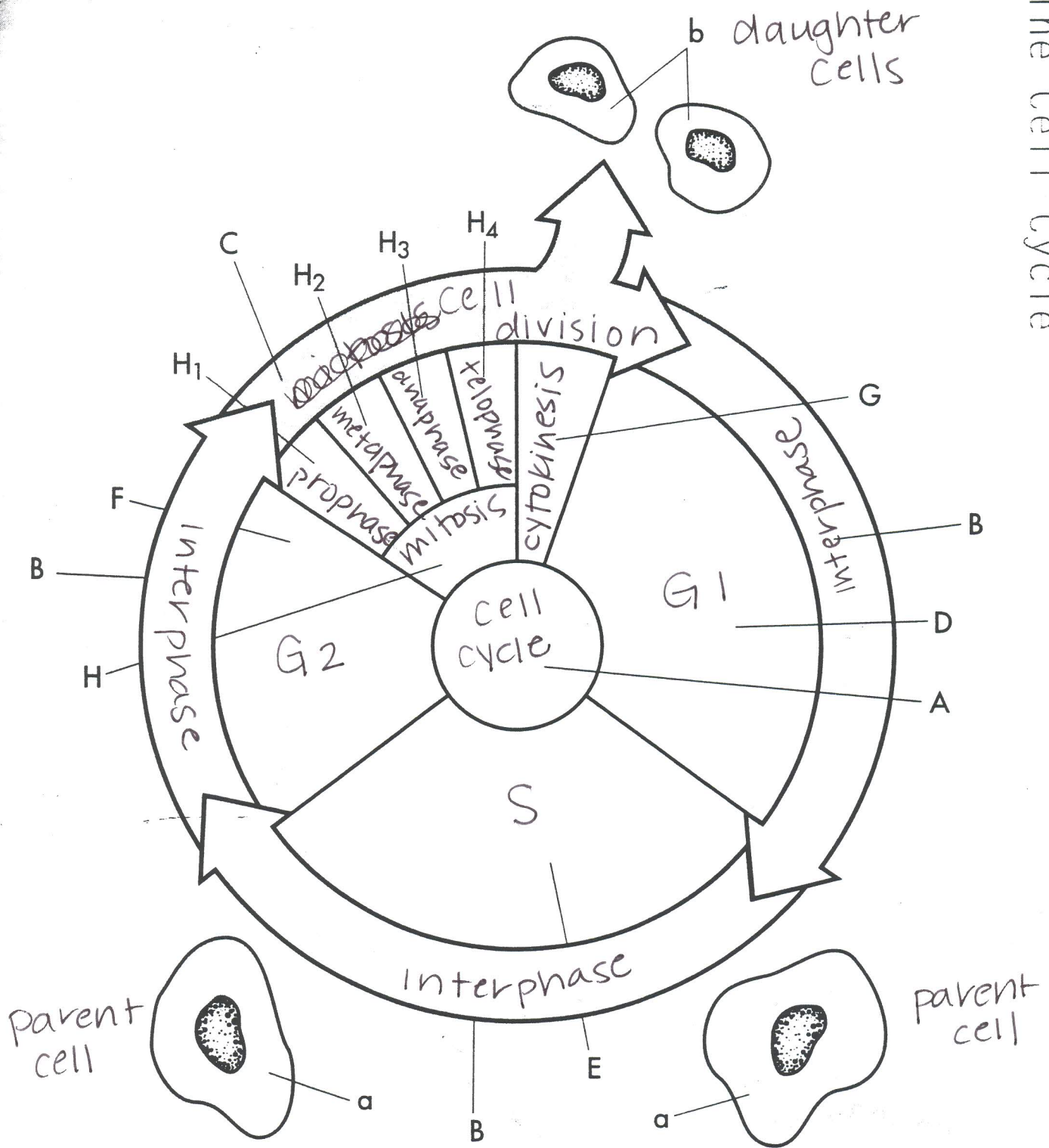
Name Key

Period _____

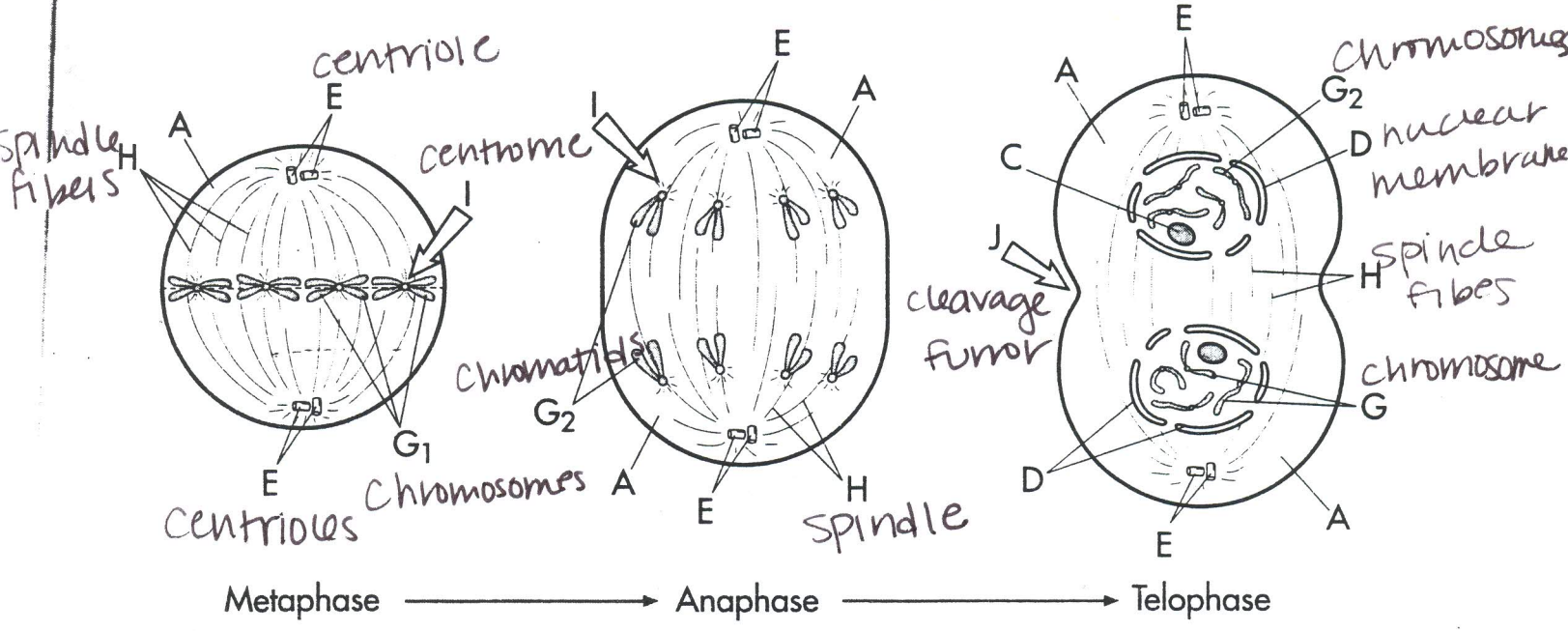
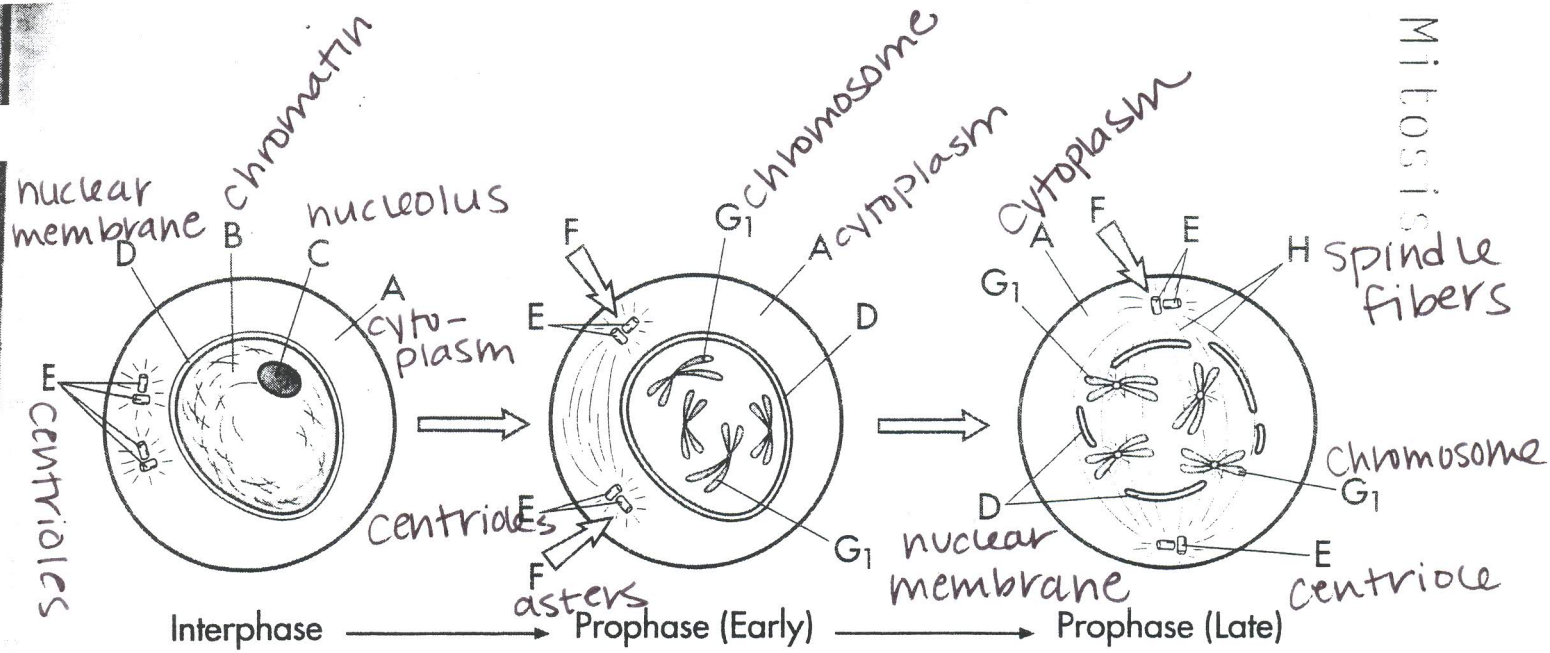
3 Major Processes



The Cell Cycle



- | | | |
|---|--|--|
| <input type="radio"/> The Cell CycleA | <input type="radio"/> G2F | <input type="radio"/> anaphase.....H ₃ |
| <input type="radio"/> Interphase.....B | <input type="radio"/> cytokinesis.....G | <input type="radio"/> telophase.....H ₄ |
| <input type="radio"/> cell division....C | <input type="radio"/> mitosis.....H | <input type="radio"/> parent cell.....a |
| <input type="radio"/> G1D | <input type="radio"/> Phases of Mitosis | <input type="radio"/> daughter cells |
| <input type="radio"/> SE | <input type="radio"/> Prophase.....H ₁ | |
| | <input type="radio"/> metaphase.....H ₂ | |



- Mitosis
- | | | |
|--------------------------|----------------------------------|-------------------------|
| ○ cytoplasm.....A | ○ centriole.....E | ○ spindle fibers...H |
| ○ chromatin.....B | ○ aster.....F | ○ centromere.....I |
| ○ nucleolus.....C | ○ chromosomes.....G ₁ | ○ cleavage furrow.....J |
| ○ nuclear membrane.....D | ○ chromatids.....G ₂ | |