

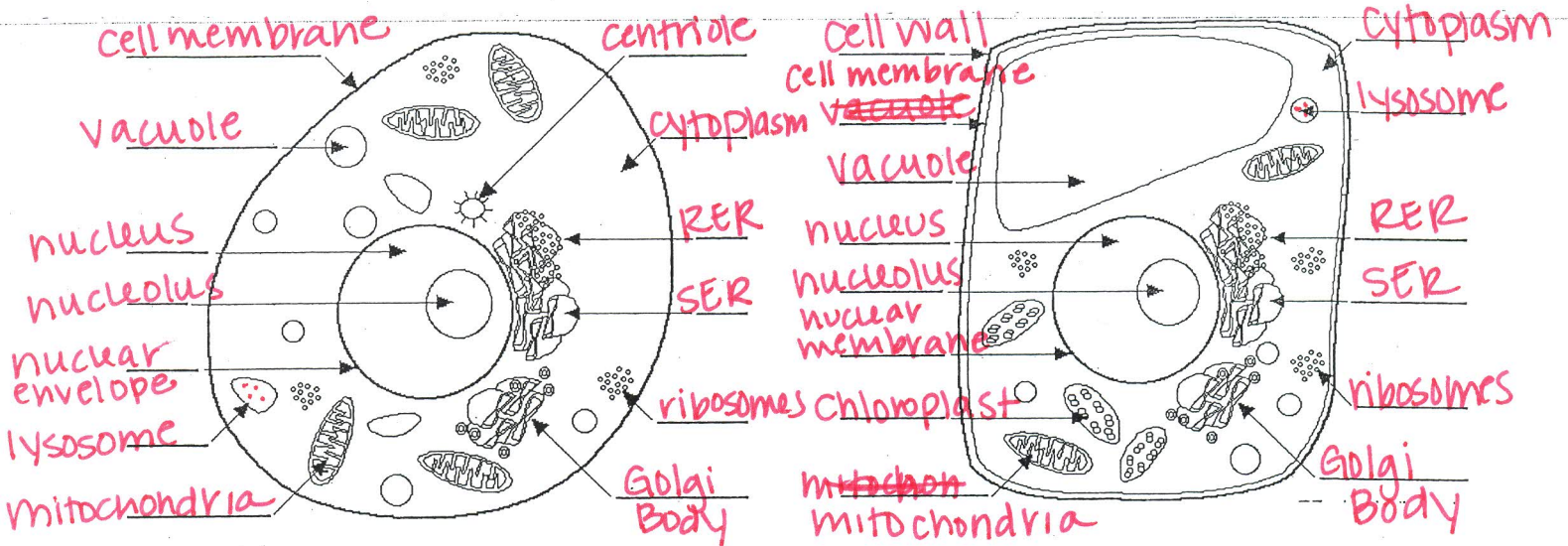
Name Key

### Organelles

Label each of the cells. Then write the cell organelle functions below:

This is a(n) animal cell

This is a(n) plant cell



Now record the function of the different organelles below:

| Organelle         | Function   |
|-------------------|--|
| cell wall         | provides structure & support for plant cells   |
| vacuole           | stores water   |
| nucleus           | control center of the cell, stores DNA   |
| nucleolus         | makes ribosomes  |
| nuclear envelopes | allows particles in/out of the nucleus   |
| lysosome          | digests particles; worn out organelles   |
| mitochondria      | cell respiration - turns chemical energy into usable energy $\Rightarrow$ sugar into ATP |
| Golgi Body        | packages & sends macromolecules through the cell   |
| ribosomes         | makes protein  |
| SER               | puts lipids together, allows macromolecules to pass through                              |
| RER               | site of protein production - highway for macromolecules                                  |
| cytoplasm         | holds cell together some minor digestion   |
| centriole         | helps in cell division   |
| chloroplast       | turns light energy into chemical energy (photosynthesis)                                 |
| cytoskeleton      | support for cell moves organelles.   |