

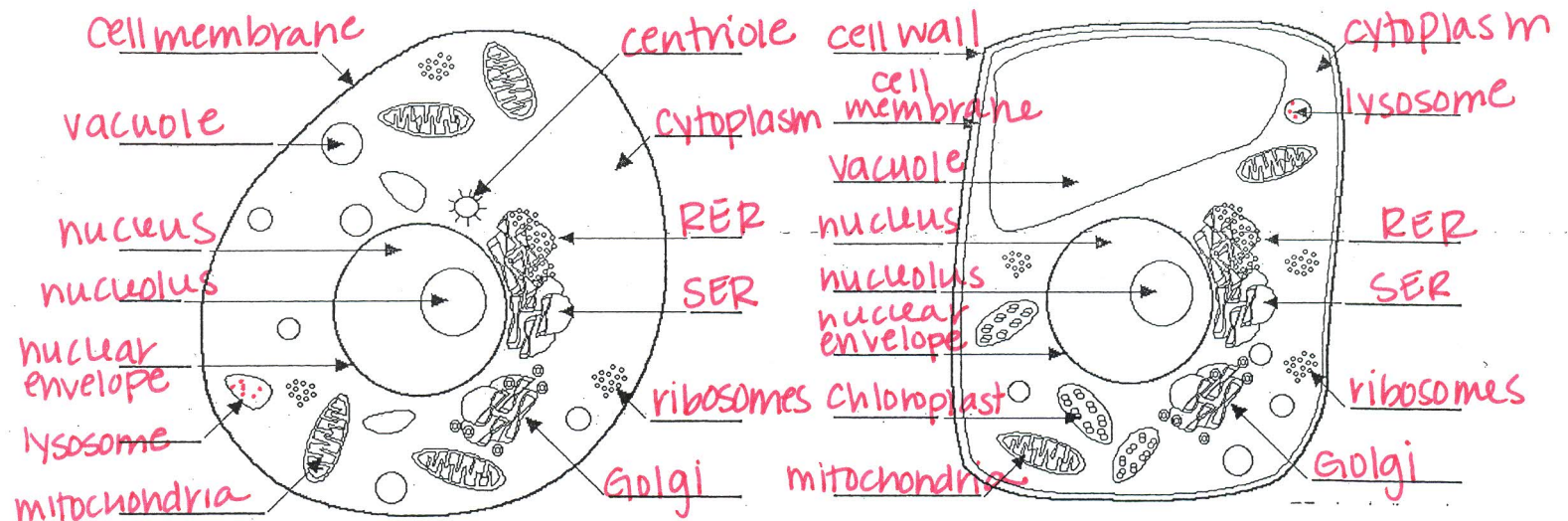
Name Key

Plant vs Animal Cells

Label each of the cells. Then highlight any difference between the plant cell and the animal cell on the diagram:

This is a(n) animal cell

This is a(n) plant cell



Now record the differences that you found in the chart below:

Only describes an animal cell	Describes both cells	Only describes a plant cell
<ul style="list-style-type: none"> • Circular in shape • Small, scattered vacuoles • Centrioles • Lysosomes 	<ul style="list-style-type: none"> Eukaryotic cell membrane nucleus nucleolus nuclear envelope mitochondria cytoplasm RER SER Ribosomes Golgi Body Alive 	<ul style="list-style-type: none"> retangular shape one large central vacuole chloroplasts cell wall lysosomes are RARELY found in these cells